

NG central
school
standing strong

2025 SCHOOL PROSPECTUS



Contents

Philosophy statement	2
School information	3
Curriculum	4
Hours of operation and term dates	6
Facilities	7
Enrolment information and fees	7



Philosophy Statement

NG Central is a secondary school that offers dynamic, innovative enterprise education for students in Year 9 - 12. We provide a holistic approach to education for young people who need an alternative to mainstream models.

We believe young people want to learn and have substantial ability to do so, when given the right conditions. Our school is an environment where all students are treated with respect, and their barriers to engagement are addressed in a holistic manner. When supporting students who have had challenging experiences with the mainstream education system, it is essential that we avoid marginalising them further and instead help them develop their capacity and motivation to learn.

At Ngaruki Gulgul, we take a practical, personalised and enterprising approach to education, combining key learning areas, vocational trades, wellbeing support, and opportunities for cultural, social, emotional and environmental engagement.

We encourage our students to connect their learning with the world around them through the integration of Aboriginal and Torres Strait Islander culture, social and environmental perspectives, and opportunities to participate in our local community. Practical work experience and training - both at school and in external workplaces - are also key to our approach, helping our students prepare for the workforce and build their employment readiness and aspirations.

We strive to develop young peoples':

Learning skills Personal skills Social skills Professional skills Cultural Connectedness

Kofi Annan, former secretary-general of the United Nations, and a powerful yet humble leader said "Young people should be at the forefront of global change and innovation. Empowered, they can be key agents for development and peace. If, however, they are left on society's margins, all of us will be impoverished. Let us ensure that all young people have every opportunity to participate fully in the lives of their societies."

And this is what Ngaruki Gulgul wants to achieve - resilient, confident, innovative, and positively engaged young people who are able to impart a purpose and direction to their lives. With this power, they will be able to stand strong and proud, with their heads held high.



School Information

Ngaruki Gulgul, which means 'standing strong' in Darkinyung language, is also known as NG Central or NGC. Our campus is located at Green Central, 2 Kangoo Road, Kariong NSW. NGC is a registered and accredited, non-government, special assistance school specifically designed for the inclusion of young people who are not succeeding in their studies in mainstream schools.

Founded in January 2014, we aim to be a successful model for many young people on the Central Coast who are ready and willing to try something new, make a fresh start and have a passion for either the horticulture, hospitality, hair and beauty/retail, automotive or construction sectors.

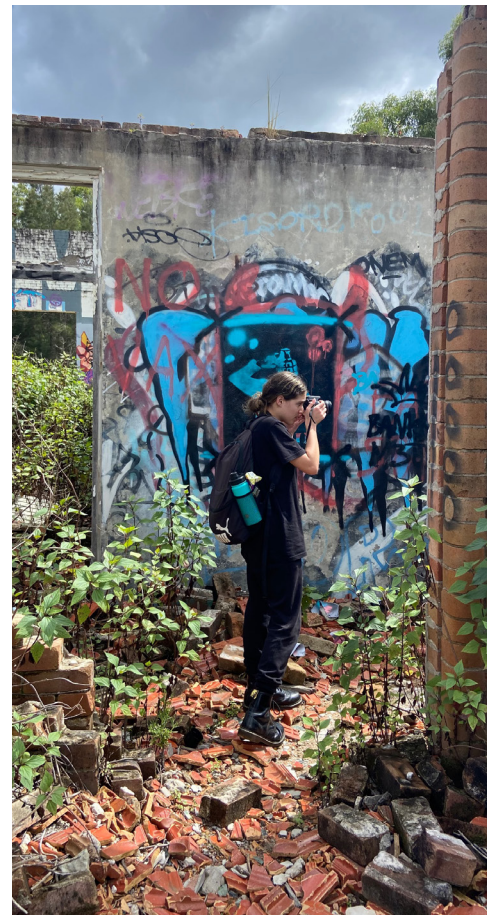
NGC strives to continue to meet a substantial need of our community; that we provide young people with the skills, knowledge and new perspectives to grow, practice self-determination and change their life trajectory in a meaningful way.

Students are offered a NSW Education Standards Authority school curriculum, as found in any other traditional school, with the addition of pathways that focus on the aforementioned industries. NGC balances the delivery of our educational and vocational activities with welfare and case management support. The result is a multifaceted program that simultaneously focuses on personal and social wellbeing, civic engagement, academic and vocational learning, practical skill development, and job readiness and employability.

We provide an education option for students in Year 9 and 10 working towards a Record of School Achievement (RoSA) and students in Year 11 and 12 working towards a non-ATAR Higher School Certificate. We also offer a pathway into a trade or further vocational education and training. NGC is not politically or religiously affiliated.

Why Ngaruki Gulgul?

- We believe you are unique and accept you the way you are
- Real vocational pathways are accessible and tailored to current industry standards
- You attend because you have a desire to make a difference to your future and impart purpose and direction to your life
- You have the opportunity to make choices about your role as a student
- Stronger support is available if you need it
- You and teachers are on a first name basis
- Smaller class/school size means we get to know you as an individual
- The harder you work, the more you get
- There are no school uniforms, school bells or school assemblies
- You have the opportunity to learn in an environment which helps you to develop the skills and values you need to fulfil your unique destiny and find your place in the world.





Curriculum

In our globalised and technologically connected world, simply acquiring factual knowledge isn't as significant as it once was. Rather, a core objective of education today is helping students to find, evaluate and creatively use the abundance of information that is available to them. Our staff expertly navigate these processes and empower our students to not just acquire, but actively apply their skills and knowledge across a range of different academic, practical and social pursuits.

As well as covering the key learning areas of the NSW curriculum, our school also provides cultural education, welfare support and opportunities for civic and social participation. Our young people come to us hungry to express themselves and find a space where they feel like they belong and are valued. We seek to accommodate these needs by nurturing their strengths and talents and providing opportunities for further engagement and extension.

We also emphasise the importance of caring and strong relationships to support the welfare and emotional wellbeing of our students and their families. These relationships are built on high expectations, which we believe are essential to the success of our young people, no matter their background. Ngaruki Gulgul aims to rewrite the limiting script our young people often internalise from a young age, where they often doubt their capacity to learn, grow and contribute to those around them. With this in mind, we emphasise the importance of self-empowerment, tenacity and accountability in achieving genuine success.



Record of School Achievement (ROSA) requirements:

Subjects will be reported with grades (A-E). Teachers use the General Performance Descriptors in determining the appropriate grade to award. This will be outlined in a separate booklet given out during Semester 1 of Year 10.

At Ngaruki Gulgul we have the ability to tailor a student's program to their capabilities. We are registered and accredited to offer participants the core curriculum subjects and a selection of VET subjects. We offer participants the opportunity to gain a RoSA, a certificate that can be requested through the NSW Education Standards Authority, along with a nationally recognised certificate in their chosen VET subject.

The Record of School Achievement (RoSA) is the credential for students who leave school after Year 10 and before they receive their Higher School Certificate (HSC). It is a cumulative record of all academic achievement designed to record and credential all of a secondary school student's academic results up until the HSC.

- The RoSA will detail grades for courses a student completes right up until the time they leave school.
- If a student leaves school before receiving a grade in Year 11 or Year 12 courses, their RoSA will record the courses they commenced.
- This measure acknowledges the fact that some students begin senior secondary study but then leave school for employment or other training opportunities before receiving their HSC.



Years 11 and 12

We also provide a Year 11 and 12 program which offers a curriculum option for students who are wanting to achieve the HSC. This education program meets the requirements of the Education Act and has Board Developed and Board Endorsed Content status. It does not lead to an ATAR (which is required for entrance into university).

A student will be considered to have satisfactorily completed a course if, in the Principal's view, there is sufficient evidence that the student has:

- Followed the course developed or endorsed by NESA
- Applied themselves with diligence and sustained effort to the set tasks and experiences provided in the course by the school
- Achieved some or all of the course outcomes

It is assumed that participants have completed their mandatory Technological and Applied Studies (TAS), Creative Arts and Language hours in Years 7 and 8.

2025 SUBJECTS INCLUDE:

YEAR 9 & 10

English
Mathematics
Science
PDHPE
Geography
History
Try a Trade
Outdoor Recreation
Cultural Education

*** VET subjects are delivered
by the AISRTO RTO ID#90413**



YEAR 11 & 12

English Studies (Mandatory)
Numeracy Course
Investigating Science
Sport, Lifestyle & Recreation Studies
Photography, Video and Digital Imaging, [or an eVET course](#)

Plus one of the following subjects:

- Industrial Technology (Automotive)
- Certificate II in Hospitality (SIT20322)
- Certificate II in Horticulture (AHc20422)
- Certificate II in Construction Pathways (CPC20220)
& SOA from Certificate II in Construction (CPC21020)
- Certificate III in Retail (SIR30216)
- [OR an eVET course](#)

Hours of Operation

Office hours are Monday to Friday, 8am – 3:30pm and hours of learning are Monday - Thursday, 9:00am – 2:30pm; Fridays, 8:45am – 1:45pm

Participants will be notified of Pupil Free Days, Staff Development Days or School Excursions throughout the year as they arise.

We provide written information when the regular school hours are disrupted. Ngaruki Gulgul terms generally correspond to NSW school term dates with a three week break for the winter holidays. There are some variations according to which grade and orientation dates, exam dates and graduation. For specific details please contact the school directly.

2025 School Terms

Term 1	10 weeks	Thursday 6th February - Friday 11th April
Term 2	10 weeks	Wednesday 30th April - Friday 4th July
Term 3	10 weeks	Tuesday 22nd July - Friday 26th September
Term 4	10 weeks	Tuesday 14th October - Friday 19th December



Facilities

Ngaruki Gulgul is a unique school and a model of enterprise education.

Ngaruki Gulgul is housed in pleasantly appointed, sustainable (carbon neutral) classrooms - in the beautiful bush setting of Mt Penang Parklands. We have a wide range of additional facilities onsite to aid both classroom learning and vocational training. These include a youth hub, BBQ area, hot house, nursery, vegetable and bush tucker garden, construction and automotive shed, hair and beauty salon, education centre, café/kitchen, gym, NG Jam Room (music hub), library, cultural space, mini-cinema, and meeting rooms.

The facility is designed for disabled participants to reach most areas in wheelchairs. This adds to the feeling of space and makes it easy for everyone to move between classrooms. It is designed to facilitate co-operative learning and create different spaces for participants and teachers to use inside and outside the buildings.



Getting To and From School

The school privately operates two buses, one picking up from Toukley, Lake Haven Shopping Centre and various stops along the route to Kariong. Another from Umina Beach, Ettalong, Woy Woy. Students from the east travel to Gosford Train Station and catch the Busways 33/4 bus line from Stand F.

How to Enrol

Places are limited to allow participants greater opportunity to identify their strengths and work to improve the areas in which they lack confidence. Enrolments are accepted during the year. However, in selecting any student to fill a vacancy, we give special consideration to young people and their families where there is a demonstrated commitment to the school and our underlying philosophy.

There are a number of simple ways to apply for a place at NGC:

- Call us on 4343 5000 for an interview. You will be asked to complete some paperwork on arrival.
- Download an [Application for Enrolment form on our website](#) and send it to admin@ngc.nsw.edu.au. You will then be contacted for an interview.

Participants will not be enrolled at NGC without attending an interview. Where possible we encourage both parents to join their young person for the interview. We ask questions about previous schooling and why the student wants to attend our school, as well as enquiring about any relevant wellbeing history or behavioural incidents. People who participate in the interview with an openness and willingness to embrace change have the best chance of gaining a position within the school. An interview is not a guarantee of enrolment. A student's acceptance into the program is dependent on their presentation at interview and their demonstrated ability to work within the policies and philosophy of NGC.

Fees and Charges

While there are no school fees, we charge a \$50 application fee (payable at the time of interview), and \$295/term for Year 9 and 10 students, and \$420/term for Year 11 and 12 students for materials being payable at enrolment acceptance then at the end of each term for the following term. Fortnightly direct debit plans are available, as well as fee assistance for those who are motivated in their learning, and experiencing poverty or other extenuating circumstances.

Ngaruki Gulgul selection criterion looks at 8 key areas:

- Desire to work in a trade area such as hospitality, automotive, construction, retail, or primary industries
- Social disadvantage and/or isolation
- Age
- Academic achievement
- Financial disadvantage
- Aboriginal and/or Torres Strait Islander
- English as a second language
- Learning and/or behavioural difficulties/disabilities

Please Note: The contents of this document are subject to change without notice.



Green Central, 2 Kangoo Road, Kariong, NSW, 2250

PO Box 7204, Kariong NSW 2250

Phone: (02) 4343 5000 **Fax:** (02) 4343 5001

Email: admin@ngc.nsw.edu.au

www.ngc.nsw.edu.au